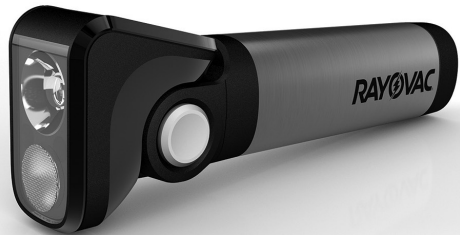
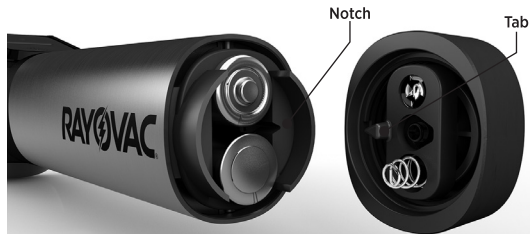


RAYOVAC®



WHESFL4AA-B THE DETECTOR WORKLIGHT

REPLACING BATTERIES



Unscrew end cap. Insert batteries as indicated inside the battery compartment.

Align tab on end cap to notch on flashlight and screw end cap back on.

FLASHLIGHT OPERATIONS



Manual Mode

Press on/off button 1x for SPOT light mode.

Press on/off button 2x for FLOOD Light mode.

After waiting 5 seconds the next on/off button press will turn flashlight off.

Sensor Mode

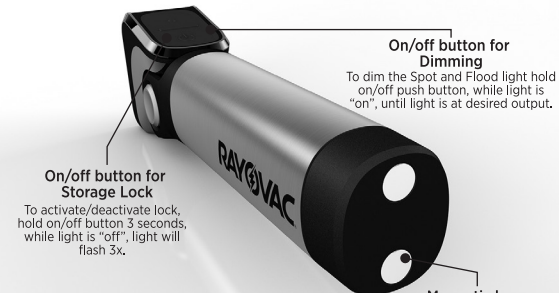
Press sensor button to engage auto SPOT TO FLOOD mode.

Red LED indicates that infrared sensor is activated. Flashlight will switch from spot to flood when shining on nearby objects. This reduces glare and creates an even light for up-close use.

Flashlight will switch from flood to spot when shining on distant objects. This focuses beam and creates precise light for far-out use.

Pressing sensor button again will turn the flashlight off.

SPECIAL FEATURES



On/off button for Storage Lock

To activate/deactivate lock, hold on/off button 3 seconds, while light is "off", light will flash 3x.

On/off button for Dimming

To dim the Spot and Flood light hold on/off push button, while light is "on", until light is at desired output.

Magnetic base

Magnetic base for mounting on metal surfaces

Sensor Distances

FLOOD MODE = Object is less than 6.5ft*

SPOT MODE = Object is greater than 6.5ft*

**Sensor distances may vary +/- 2ft with ambient light levels and surface texture.*